

MOSMAN ACCESS & MOBILITY COMMUNITY CONSULTATIVE COMMITTEE

Chairperson: Cr Carolyn Corrigan

Deputy Chair: Cr Simon Menzies

Minutes of the Meeting held in the Harnett Room Wednesday 5 July 2017 commencing at 8.34am

PRESENT

Councillors

Cr Carolyn Corrigan

Resident Members

Pip Friedrich

Steve Goudie (by conference call)

Di McKrummel

Nell Rickard

Apologies

Cr Simon Menzies

Nicola Atmore, Manager Community Services

Steven Smith, Manager Environment and Open Space

Staff Attendance

Chandra Chandrawansa, Manager Engineering

Dianne Page, Acting Manager Community Services

Elizabeth Kemp, Team Leader Community Development Administration

Agenda Number	ITEM	Action
1.	WELCOME AND INTRODUCTIONS Cr Corrigan opened the meeting by welcoming everyone in attendance.	
2.	APOLOGIES Apologies were noted	
3.	ADOPTION OF PREVIOUS MEETING MINUTES The Minutes of the 1 March 2017 meeting were accepted as a true and accurate record. Moved: Di McKrummel Seconded: Nell Rickard	
4.	DISCLOSURES OF NON-PECUNIARY INTEREST There were no disclosures of non-pecuniary interest.	

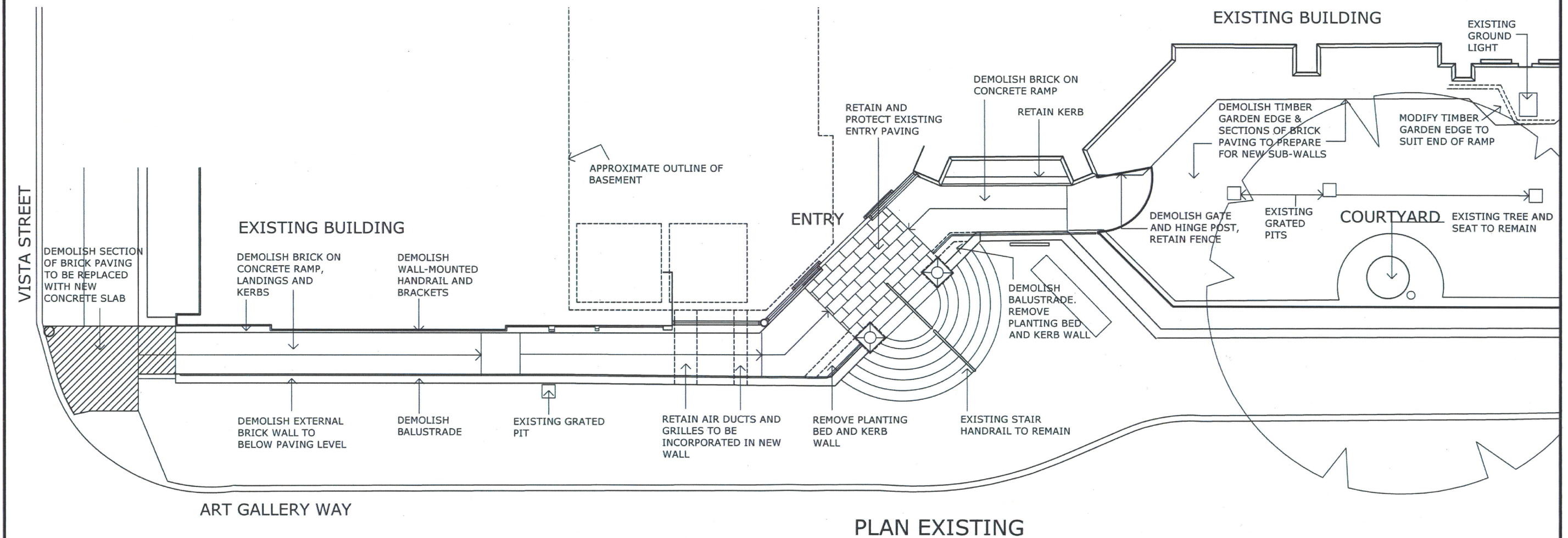
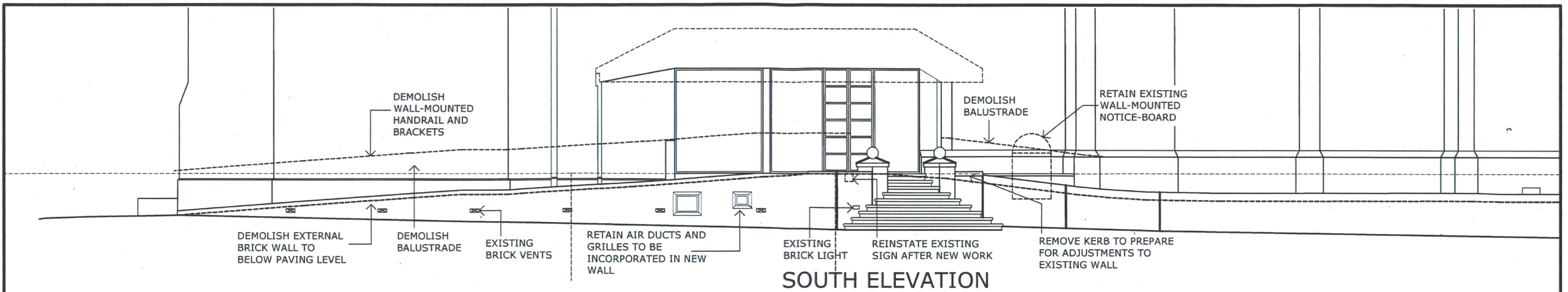
5.	<p>MATTERS ARISING FROM PREVIOUS MEETING</p> <ul style="list-style-type: none"> <p>Visibility of accessibility page on our website</p> <p>Dianne Page has been advised that Nicola Atmore is working with the Communications team to increase the visibility of accessibility information. While it is not possible to have a separate tab from the home page, they will investigate ways to improve the accessibility and visibility of the relevant webpages.</p> <p>Pip Friedrich raised the matter of 'Crocodile readers' that assist in making websites more accessible for people with sight impairments. Pip will forward this information to Council.</p> <p>Press release regarding the DIAP</p> <p>Dianne Page tabled the current <i>Mosman Now</i> newsletter and pointed out the <i>A more inclusive community</i> article. This newsletter goes to every household in Mosman. There have also been three recent press releases addressing accessibility. These press releases also go to <i>North Shore Living</i>.</p> <p>Items in regards to DIAP were also included in <i>Mosman Now</i> and community organisations have been notified.</p> <p>There has been some feedback, which was positive. It was noted that Council usually only hears feedback when there are issues.</p> <p>Reporting on the DIAP will be included in the annual report, which will go to the State Minister for Disability Services. Updates are part of both internal and external processes.</p> <p>Update on accessible toilets for Library Walk, Spit West and Raglan Street West</p> <p>There is not enough space to make the Library Walk toilets accessible, so this will remain as is.</p> <p>The Spit West toilets are not in next year's plan.</p> <p>The Raglan Street West toilets cannot proceed during the current merger proposal period as this is part of a proposed larger development.</p> <p>The Alan Border Oval club area is to be redeveloped. Accessible toilets will be included.</p> <p>Di McKrummel raised the need for a press button for lights in public toilets.</p> <p>Croquet Club toilets</p> <p>Nicola Atmore checked with the Club's secretary about this. The Club's toilets are accessible to the public during Club hours.</p> <p>NDIS Provider infrastructure</p> <p>This is still being investigated.</p> <p>Disability specific services run by ADS include a Friday night group activity for young adults, a Saturday group activity for young people, and transport services.</p> 	
6.	<p>BEACH ACCESS</p> <p>Steven Smith and a project engineer have looked at this. Consultancy proposals from consultants should be received by 10am today. A consultant will be appointed two weeks from response and a concept will be put forward in two months from then. The Committee agrees that it needs to be conveyed to the public that options are being explored. The option for beach access into the netted water area will be kept open for consultants to advise Council.</p>	Steven Smith

7.	<p>UPGRADE OF ACCESSIBILITY INFRASTRUCTURE</p> <ul style="list-style-type: none"> Rosherville Reserve Ramp It has been decided that Clifton Gardens is the most suitable for beach access. For details, refer to number 6 above. Pram ramps along Spit, Military, Cowles and Belmont Roads These have been completed, with nearly 50 done in the 2016/17 financial year. The Committee agreed that access had been greatly improved as a result of this. Cr Corrigan suggested a media release go out about this. Footpath renewal works along Spit Road Council was not looking at new works close to EOFY and instead was concentrating on completing the projects in progress. Balmoral promenade works Council resolved to complete the entire footpath. When slabs are removed, any voids will be filled to minimise settlements. Major works are expected to be finished by October/November 2017. Works will not be done during summer but will recommence next winter to complete balance works. The wall was recently upgraded and so will not be part of the current upgrades. Nell Rickard raised the issue of a tree root that is causing problems on the eastern side of Spit Road between Awaba Street and Stanton Road. Chandra Chandrawansa will look into the matter. Steve Goudie raised that there is an area at Balmoral that is difficult to safely cross the road. An email has been sent to Director Environment & Planning and will be forwarded to Chandra. 	<p>Chandra Chandrawansa</p> <p>Chandra Chandrawansa</p>
8.	<p>GENERAL BUSINESS</p> <ul style="list-style-type: none"> DiannePage tabled the <i>Pathways to Inclusion</i> guide. This has been produced by Guide Dogs NSW/ACT, Blind Citizens NSW, People with Disabilities Australia and Inner West Council to augment guidelines produced by LGNSW, after surveying 488 people with disability to find out what they see as major issues. Council is covering these issues in its DIAP and with the AMCCC. Nell Rickard and Di McKrummel raised that there are some obstacles along the shop lines, which makes it difficult for the visually impaired. Steve Goudie raised that there is a need for smoother footpaths, with uneven pavers being an issue. Nell Rickard added that this is particularly an issue for those with spinal injury. Chandra explained that due to Council requirements, the existing pavers cannot be replaced with concrete. Chandra will have the pavers looked at. Council is trying to widen the existing Gallery ramp and add landings, despite being over budget. Plans attached. <i>Imagine Mosman 2028</i> for the next MOSPLAN is underway. The Committee completed the Community Organisation Survey together. Also attached. Elizabeth Kemp to send Steve Goudie the two documents that were tabled. 	<p>Chandra Chandrawansa</p> <p>Elizabeth Kemp</p>
9.	<p>NEXT MEETING</p> <p>Wednesday 8 November, 2017</p>	

The Mosman Access & Mobility Community Consultative Committee is a community initiative of Mosman Council.

Enquiries to Nicola Atmore 9978 4006 or Chandra Chandrawansa 9978 4023.

The agenda and minutes for all community groups can be found on the Council website
www.mosman.nsw.gov.au



This drawing and design is subject to copyright and may not be reproduced without prior written consent. This drawing must be read in conjunction with the other contract documents including the Project Specification & any instructions issued by Architecture + Access during the course of the contract. Contractors must verify all dimensions on site prior to commencing any work or shop drawings. Written measurements take precedent over scale.

No:	Date:	Revision:
A	11/04/17	REV SCHEMATIC DESIGN
B	21/04/17	QS ISSUE
C	27/04/17	CONSTRUCTION ISSUE
D	03/05/17	REV. CONSTRUCTION ISSUE



ARCHITECTURE & ACCESS

Creating environments, transforming lives.

Architecture & Access (Aust) Pty Ltd
ABN 45 159 663 582

P 1300 715 866
F +61 3 9347 5982

E info@architectureandaccess.com.au
W architectureandaccess.com.au

Level 5, 369 Royal Parade
Parkville, Victoria 3052 Australia

CONSTRUCTION ISSUE

Client:	MOSMAN COUNCIL
Project address:	MOSMAN ART GALLERY
Project name:	UPGRADE TO EXTERNAL RAMPS
Drawing:	EXISTING CONDITIONS & DEMOLITION
Scale @ A3:	1:100
Drawn by:	RB
Checked by:	AS
Project No:	6830
Drawing No:	A01
Rev No:	D



IMAGINE MOSMAN 2028



COMMUNITY ORGANISATION SURVEY

Organisation Mosman Council Access and Mobility Community Consultative Committee

Contact Name Cr Corrigan

Position Councillor and Committee Chair

Phone _____

Email _____

Bearing in mind the particular interests and activities of your group or organisation, what do you consider to be the TOP THREE priorities for Mosman's future (say the next 10 years)?

1 Pedestrian safety, giving enough time to cross roads

2 Integrating access and inclusion in every aspect of life in Mosman

3 Continuing provision of access to all public areas and services in Mosman

TURN OVER TO CONTINUE

What do you think Mosman Council should be doing over the next 10 years to address the priorities listed over (list up to THREE key actions)?

- 1 Increase funding for access strategies
- 2 Increase awareness of community and Council staff to all aspects of inclusion
- 3 Continue to ensure all future public developments address access

Are there any other issues affecting the Mosman community more generally that you think require Council's further attention?

- Increasing ageing community
- Social isolation and loneliness
- Council continues to have strong focus on social programs
- Council continues equal employment strategies to ensure equal opportunity for people with disability
- Mosman Council's Access and Mobility Committee continues.

Thank you for your contribution. Please return this form to Council
PO Box 211 SPIT JUNCTION NSW 2088 by Friday 25 August 2017
or email to council@mosman.nsw.gov.au

**IMAGINE
MOSMAN 2028**

**Mosman
COUNCIL**